

SPECIFICATIONS FOR MUPID®-EXU & MUPID®-2PLUS

NEW GENERATION SUBMARINE ELECTROPHORESIS SYSTEM

Mupid®-exU

MIGRATION TANK	
External dimensions	183mm (W) × 164mm (L) × 56mm (H)
Buffer volume	Approx. 330-550mL (including gel and buffer)
Material	UV-transmittable resin (transmittancy: 50% at 254nm, 80% at 312nm)
POWER SUPPLY	
External dimensions	64mm (W) × 164mm (L) × 59mm (H)
Input / Output	AC100-240 V, 50/60 Hz • 18V, 25V, 35V, 50V, 70V, 100V, and 135V
Timer function	1-99 min and continuous power distribution (suspendable)
Memory function	Automatic storage of the previous settings
Safety function	Confirmation of the cover by the light sensor
GEL MAKER SET	
Gel maker stand dimensions	149mm (W) × 125mm (L) × 20mm(H)
Gel tray - Large / Small	130mm (W) × 122mm (L) • 130mm (W) × 60mm (L) (Cast 1 large or 2 small gels)
Combs - Well shape	6mm (W) × 1mm (L) × 13 wells • 2mm (W) × 1mm (L) × 26 wells

Mupid®-2plus

MIGRATION TANK	
External dimensions	187mm (W) × 136mm (L) × 57mm (H)
Buffer volume	Approx. 250-280mL (maximum 300mL when setting gel)
Material	PPHOX
POWER SUPPLY	
External dimensions	43mm (W) × 109mm (L) × 52mm (H)
Input / Output	AC100-110V • DC50V, 100V
Fuse	250V, 0.8A
GEL MAKER SET	
Gel maker stand dimensions	240mm (W) × 126mm (L) × 17mm (H)
Gel tray - Large / Mini	109mm (W) × 60mm (L) • 55mm (W) × 60mm (L) (Cast 2 large or 4 mini gels)
Combs - Well shape	6mm (W) × 1mm (L) × 12 wells • 4mm (W) × 1mm (L) × 17 wells 6mm (W) × 1mm (L) × 6 wells • 4mm (W) × 1mm (L) × 8 wells



Mupid®-exU



Mupid®-2plus

Mupid®

Everything you need
for an all inclusive
horizontal gel system

COMPACT ALL INCLUSIVE HORIZONTAL GEL SYSTEM

Mupid®-exU

Cast 1 large or 2 small gels

- **Complete UV-transmittancy**

Made of highly UV-transmittable plastic, allowing direct observation of bands during electrophoresis by installation of the bath on a transilluminator.

- **Multisample analysis (support for multipipettors)**

Allows simultaneous electrophoresis of 104 samples with a single gel. Wider than the conventional Mupid® series and can form 13 or 26 lanes, enabling sample loading with multipipettors.

- **Timer function**

The timer can be set within the range of 1-99 minutes (with alarm function). Moreover, a memory function setting is provided for storage of the previous timer and output settings.

- **Variation of input and output voltages**

Input voltage supports 100-240V, allowing worldwide use. Output voltage can be selected from 7 levels.



Mupid®-exU

CAT# MPDEXU-01

unit includes combs, trays, power supply



665 Third Street, Suite 240
San Francisco, CA 94107
415-247-8760 (tel) | 415-247-8765 (fax)
www.gelcompany.com

MINI ALL INCLUSIVE HORIZONTAL GEL SYSTEM

Mupid®-2plus

Cast 2 large or 4 mini gels

- **Highly proven, reliable system**

Improved edition of the Mupid®-2 which has shown excellent performance in various fields of research. Conventional experiment protocols can be used without alteration.

- **Excellent and functional design**

User-friendly/easy-to-operate controls and buffer discharge system.

- **Easy-to-wash electrophoresis bath**

Because the power supply can be detached, discarding buffer and/or cleaning the migration tank is easy.

- **High safety**

The Mupid®-2plus gives sufficient consideration to safety, apparent in features such as a narrowed chamber lid slit and safety switch (power supply will not turn on unless the lid is set).



Mupid®-2plus

CAT# MPD2PLUS

unit includes combs, trays, power supply

Accessories



GeneCatcher

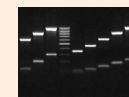
Disposable gel excision tips

CAT# PKB4.0 / PKB6.5

250 tips/bag

CAT# PKB4.0-R / PKB6.5-R

5 racks of 48 tips



Isolator

Agarose for gel electrophoresis

CAT# AGD050, 50g

CAT# AGD100, 100g

CAT# AGD250, 250g