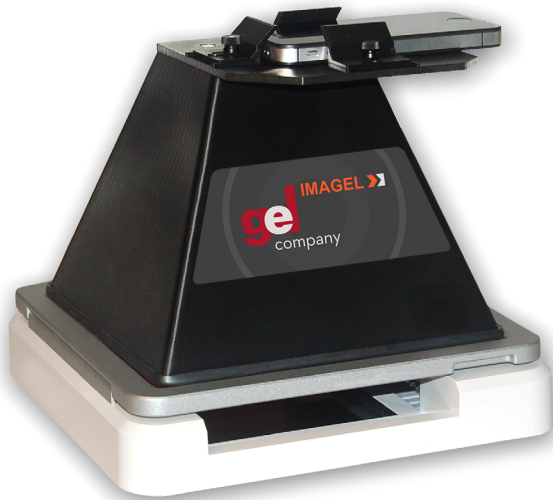


GEL DOCUMENTATION IMAGING USING YOUR SMART PHONE



Imagen

Gel doc imaging using your smart phone camera. Save your gel images to your phone or download the free app by Benchling for more features (optional).

Hood dimensions: 17cm (W) x 17cm (D) x 14cm (H)
Compatible with iPhone® 4/4S, 5/5S and Samsung Galaxy S® 3/4/5. (Smart phone and light source not included)

- **Compact design:** Total footprint with UltraThin LED Illuminator (*shown in photo*)
21cm (D) x 21cm (W) x 17cm (H)
- **Flexible options:** Can be used with 3 different light sources

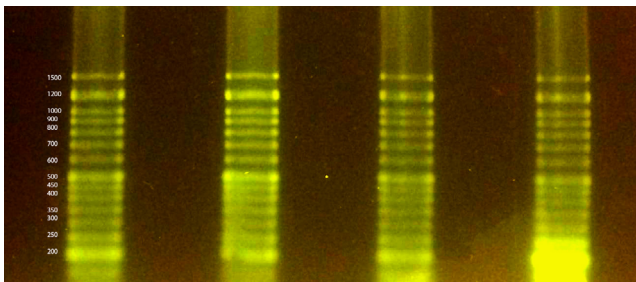
LIGHT SOURCE	STAINS
Blue LED	DNA applications: Green DNA, GelGreen, SYBR® Green, SYBR® Safe, SYBR® Gold; Protein applications using LavaPurple
UV	AmberDNA, ethidium bromide, SYBR®, Oriole™, fluorescent gel stain, GelRed, SYPRO Ruby, Coomassie Fluor Orange, Krypton
White	Protein applications: Coomassie Blue, copper, silver, zinc

- **Simplicity:** Snap a high quality photo of your gel on your smart phone and save or use the, optional, Benchling Gels app, where your image is instantly uploaded and securely stored in the Benchling cloud (free 6 month cloud storage, managed by Benchling, included with purchase of a complete system)
- **Increased image resolution:** Get images with better resolution by cropping or zooming, and utilizing a light boosting app

CAT# GDR-500 - Imagen Hood for iPhone® **\$225**
CAT# GDR-550 - Imagen Hood for Samsung Galaxy S® **\$225**



665 Third Street, Suite 240 | San Francisco, CA 94107
415-247-8760 (tel) | 415-247-8765 (fax)
www.gelcompany.com



50bp to 1500bp ladder, 2% agarose, 1XTBE buffer. Gel post stained 2 hours with Green DNA stain and imaged with the UltraThin Blue LED illuminator using iPhone® 4.

Analysis and Storage using Benchling

Benchling is a cloud-based solution for capturing, analyzing, archiving and sharing gels. Analyzing gels is quick and easy with Benchling's beautiful and intuitive web-based software.

- **Analyze:** Use Benchling's easy-to-use software to analyze your gels in your web browser. Analysis features include automatic lane/band detection, intensity mapping, and band quantification.
- **Access:** Access your gels and analysis from any device and any location via the Benchling cloud. All of your team's gels are archived for easy search and sharing.
- **Archive:** With the Benchling cloud, you can ditch your flash drives and stop emailing files around. Never worry about back-ups again.
- **Integrity:** Never worry about making a mistake. Benchling keeps detailed logs of all gel analysis, making it easy to replay your work in the future and spot mistakes.